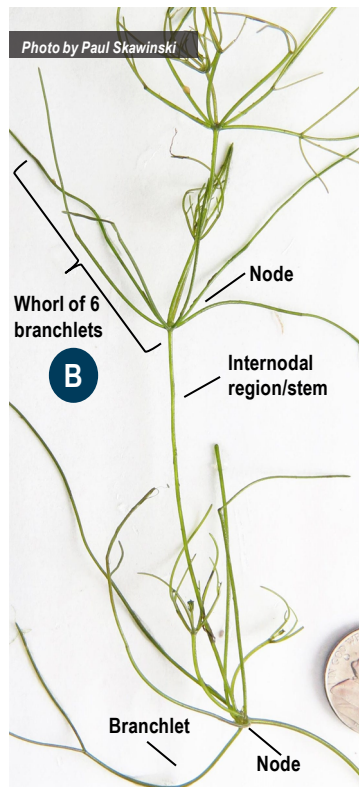
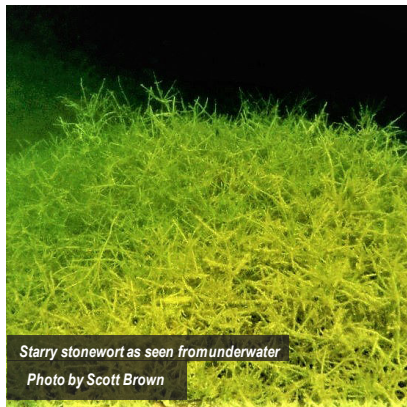


Boaters Beware!

Starry Stonewort is invading our waters!

The Dangers of Starry Stonewort (*Nitellopsis obtusa*):

- Outcompetes native, beneficial plants
- Decreases fish habitat
- Forms thick, dense mats
- Spreads via fragments



Identifying features

- A Star-shaped bulbils
- B Whorls of 5-7 branchlets
- C Lacking the skunky smell of muskgrass
- D “Pop” sound when crushed



- A Bulbils, found under the sediment



HOBART AND WILLIAM SMITH COLLEGES

FINGER LAKES
INSTITUTE



Great Lakes
RESTORATION



Only YOU Can Prevent Starry Stonewort

Through preventative measures and early detection, you can stop the spread of starry stonewort.



Prevent

CLEAN your boat of aquatic organisms or sediment

DRAIN any water back into the waterbody

DRY everything thoroughly



**STOP AQUATIC
HITCHHIKERS!™**

Detect

KNOW what to look for using the identifiers on this card

OBSERVE where the invader is and take photos

REPORT the sighting to appropriate monitoring websites and local authorities, like GLANSIS

For more information, contact:

David Carr, Project Manager

Finger Lakes Institute / Starry Stonewort Collaborative

Hobart and William Smith Colleges, Geneva, NY

315-781-4389 • dcarr@hws.edu • <https://starrystonewort.org/>



HOBART AND WILLIAM SMITH COLLEGES



FINGER LAKES
INSTITUTE

